

Chapter 1:

Before History

The Stone Age

- Two parts
 - 1) Paleolithic (Old Stone Age)
 - 2) Neolithic (New Stone Age)
- Pre-history = time before written language
- Hunting and Gathering way of life
- Lived at the mercy of the land

Key Concept 1.1 Big Geography & the Peopling of the Earth

What was life like in the Paleolithic Era?

- ☐ Small hunting-foraging bands (30-40 people)
- ☐ Egalitarian (men=women)
- ☐ Used tools made from stone and wood (spears, bows, arrows, club, axe)
- ☐ Used fire to adapt to different climates
- ☐ Family and kinship ties
- ☐ Animistic religious beliefs
- ☐ Trade of goods and technology
- ☐ Easier lives? - more free time

Characteristics of Paleolithic Lifestyle

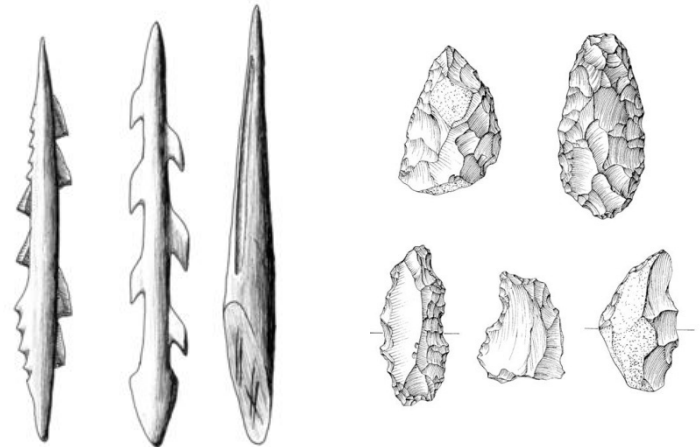
- 1) Small groups (30-40 people)
- 2) No permanent settlements (Nomadic)
- 3) Egalitarian (men = women)
- 4) Cave Paintings
- 5) Animist
- 6) Used Fire



Cave painting, Lascaux, France, 15,000 to 10,000 B.C.

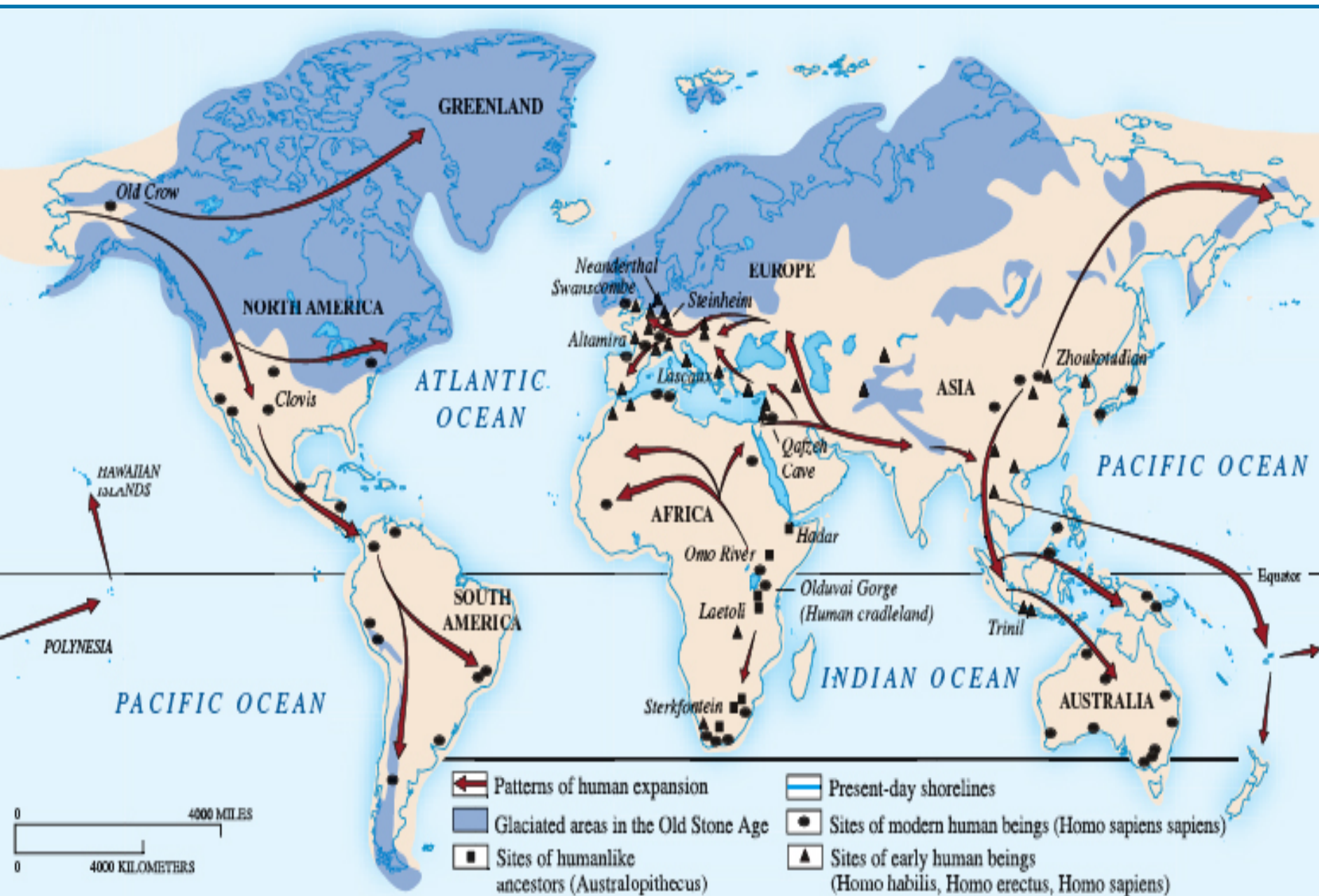
Hunter-Forager Societies

- Trade of goods
 - Trade with neighboring groups was often necessary
- Developed tools suitable for their environment



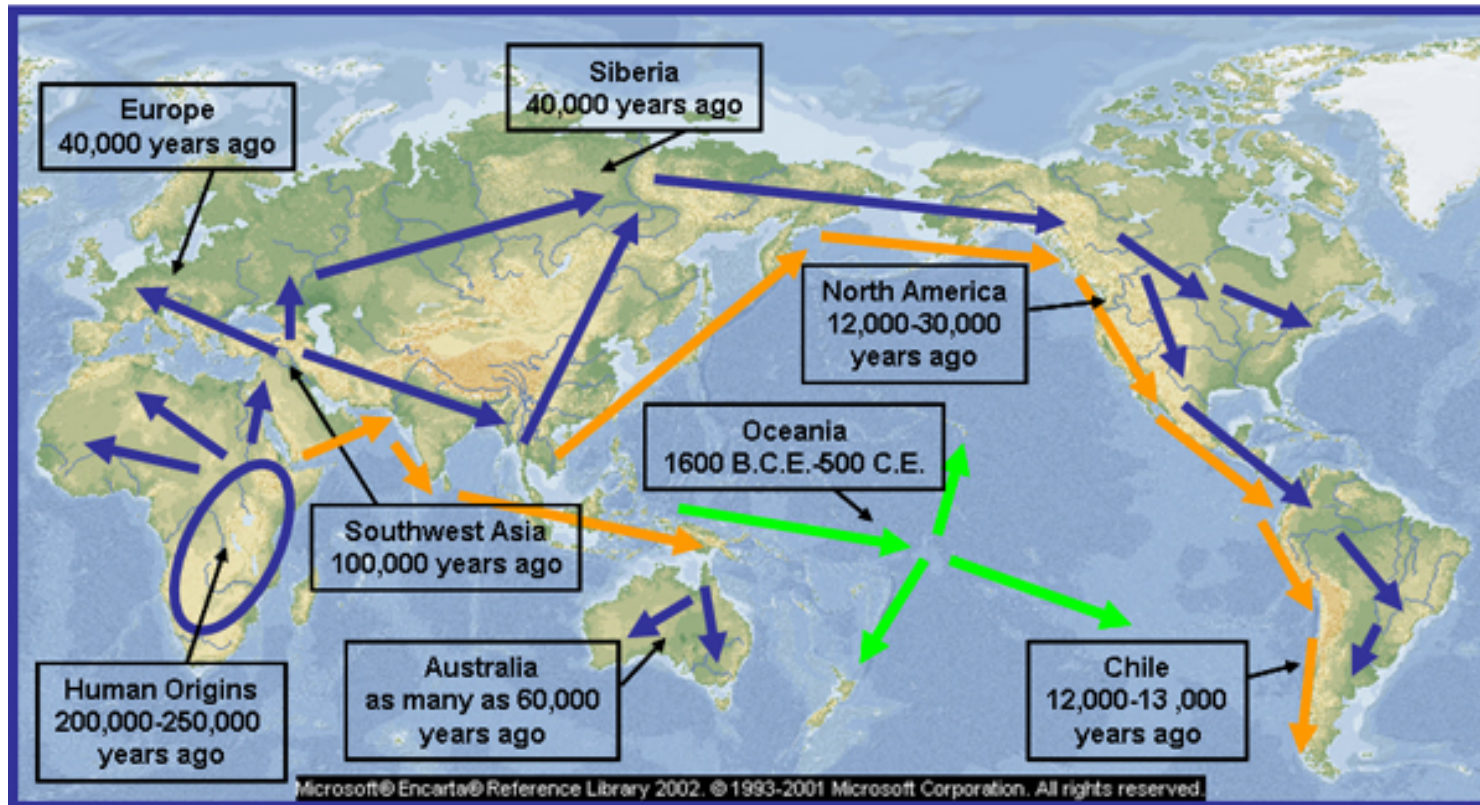
What caused humans to migrate?

Climate



Migration happened in WAVES

Migrations of Homo sapiens



- Possible coastal routes of human migration
- Possible landward routes of human migration
- Migrations in Oceania

Archeological evidence indicates that during the Paleolithic era, hunting-foraging bands gradually migrated FIRST from East Africa to Eurasia, Australia, and the Americas.



Migration patterns went from Asia into Southeast Asia

4) Southeast Asia – then to Australia IMPORTANT – first use of BOATS!



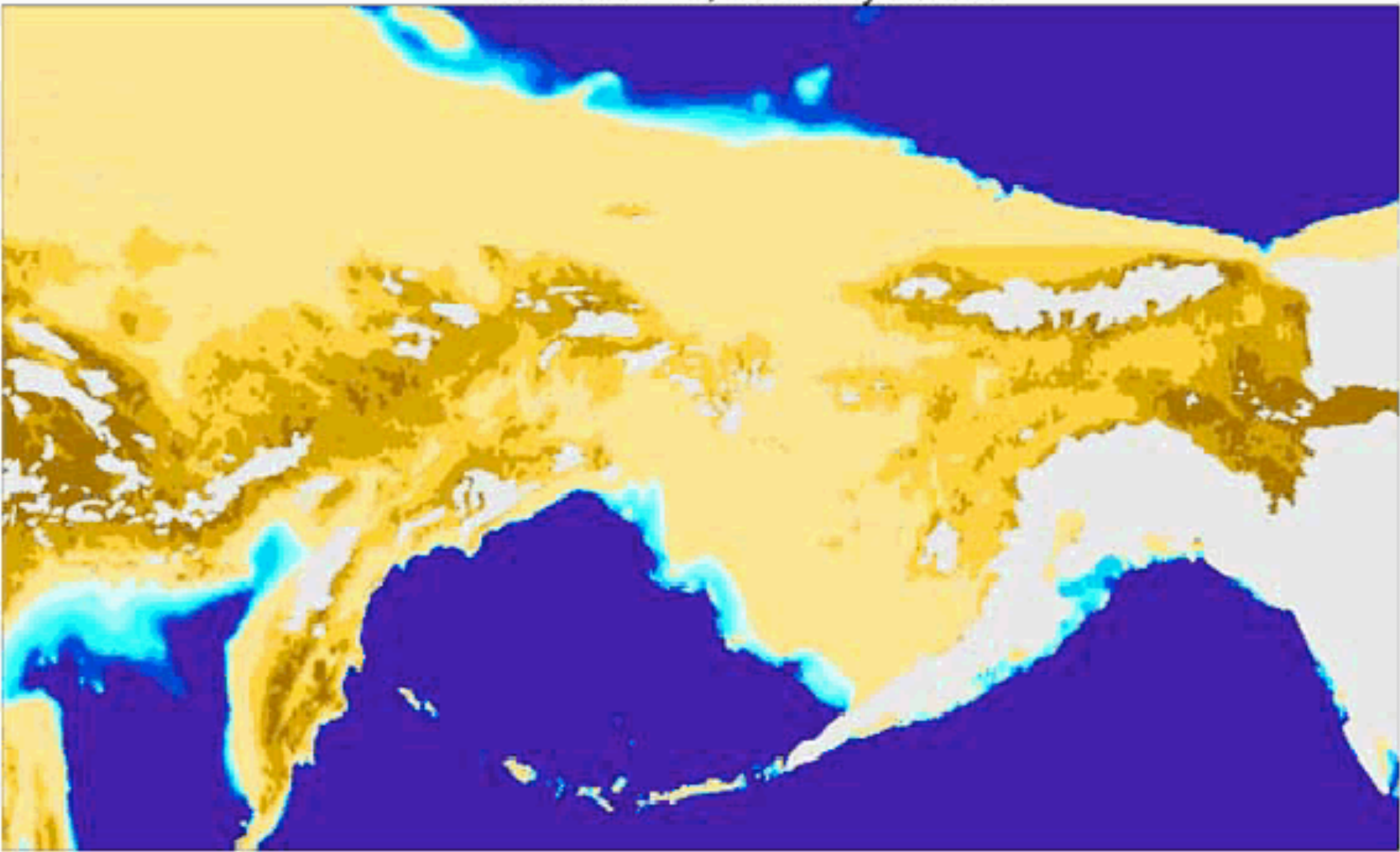
Around 15,000 BCE – some migrated from Asia into North America



How? Climate! Ice sheet! Crossed via Beringia (land bridge)

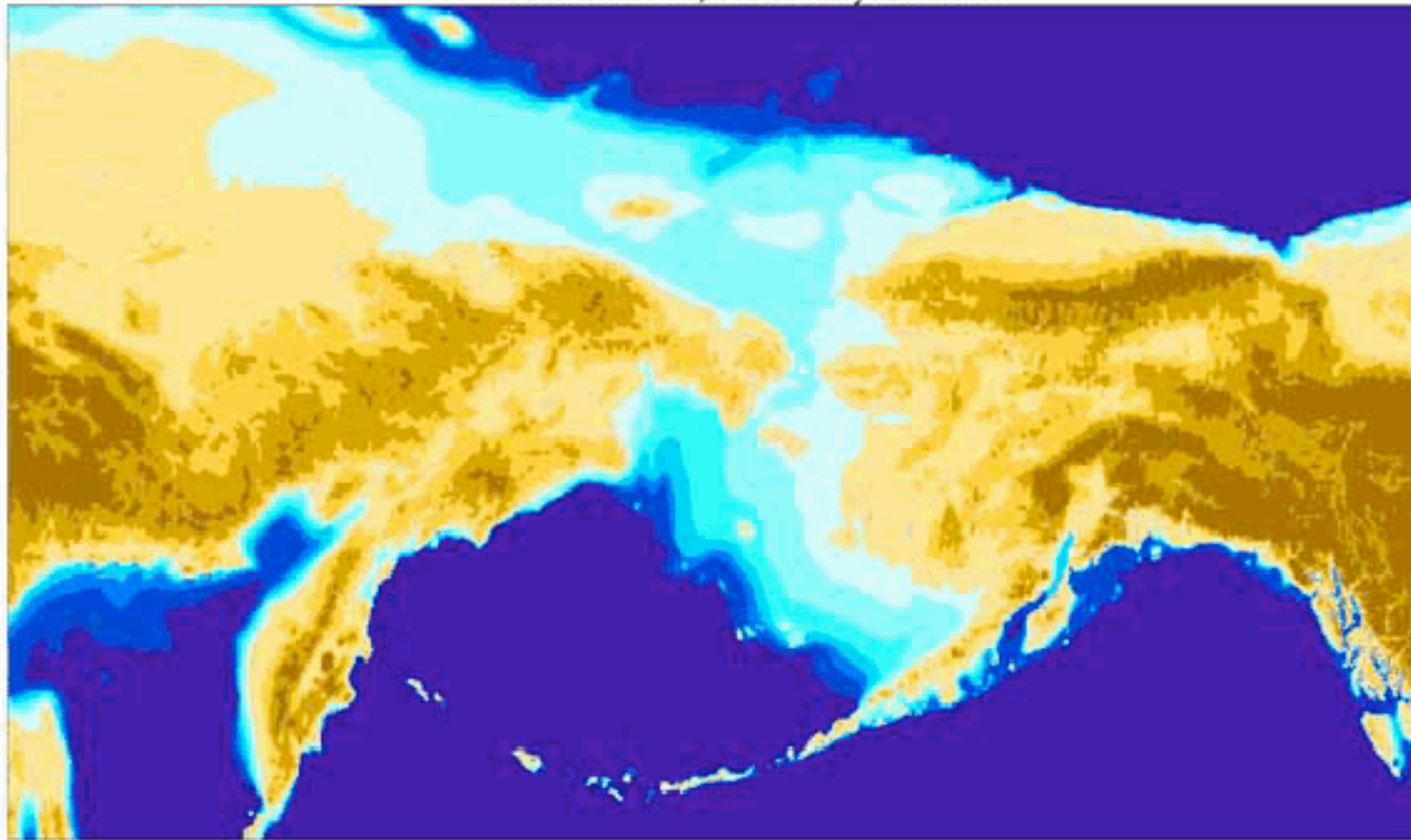
PALE Paleoenvironmental Atlas of Beringia

Coastline 18,000 Cal years BP

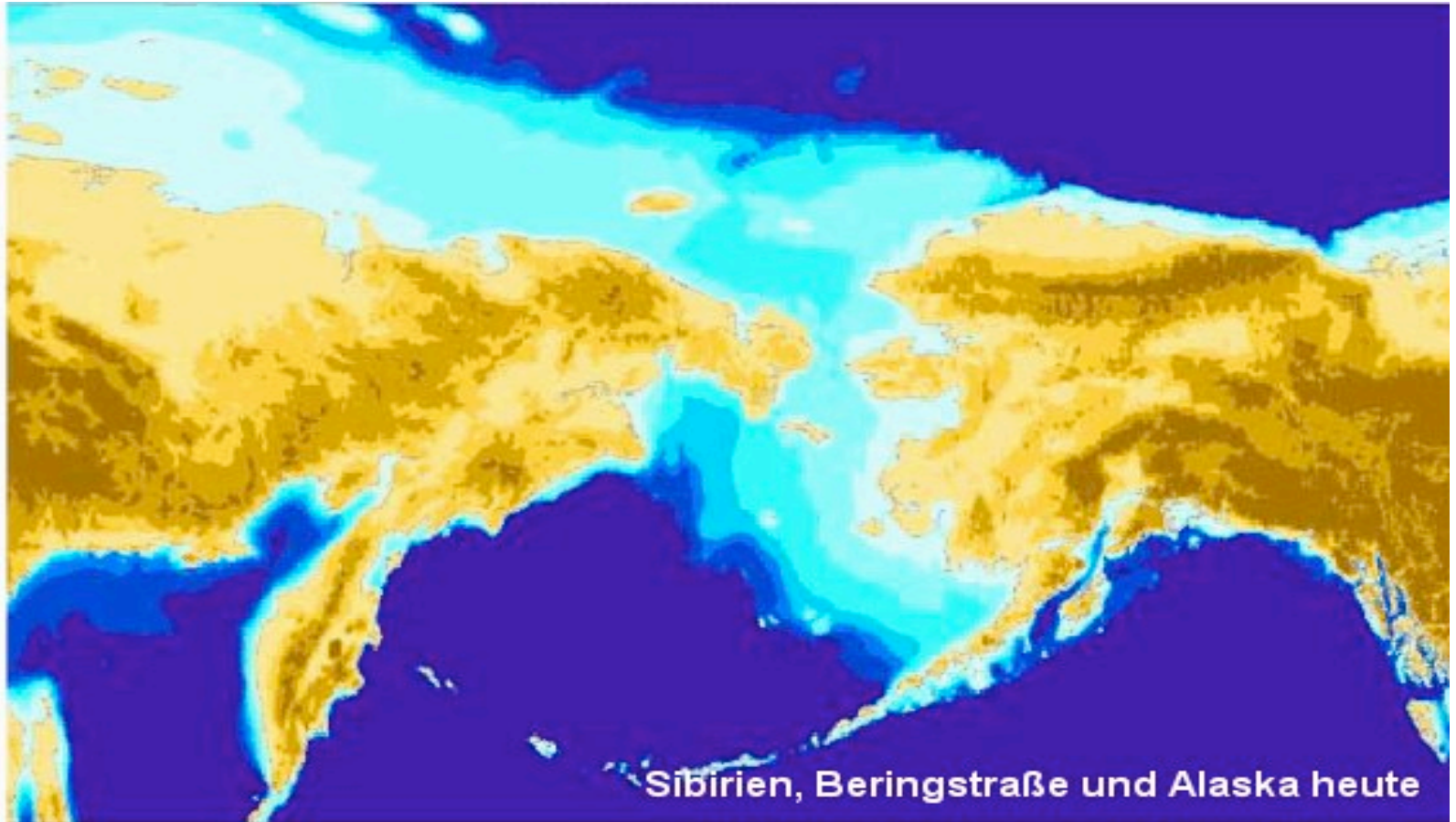


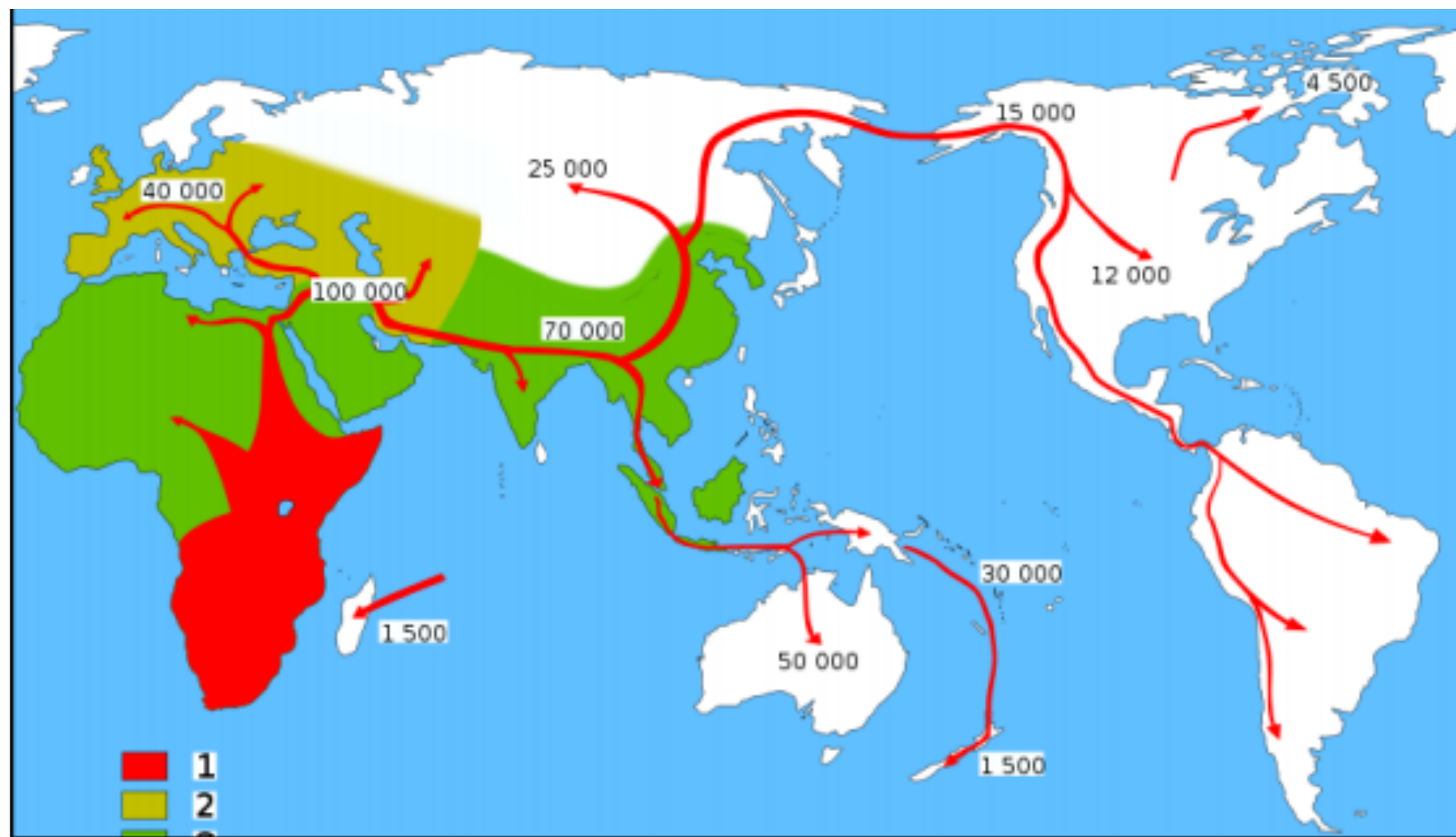
PALE Paleoenvironmental Atlas of Beringia

Coastline 8,000 Cal years BP



Modern Day





Polynesian Migrations

(3000 BCE -500 CE)

Canoes

